

WHO APPROACHED US?



39%
WOMEN



30%
MEN

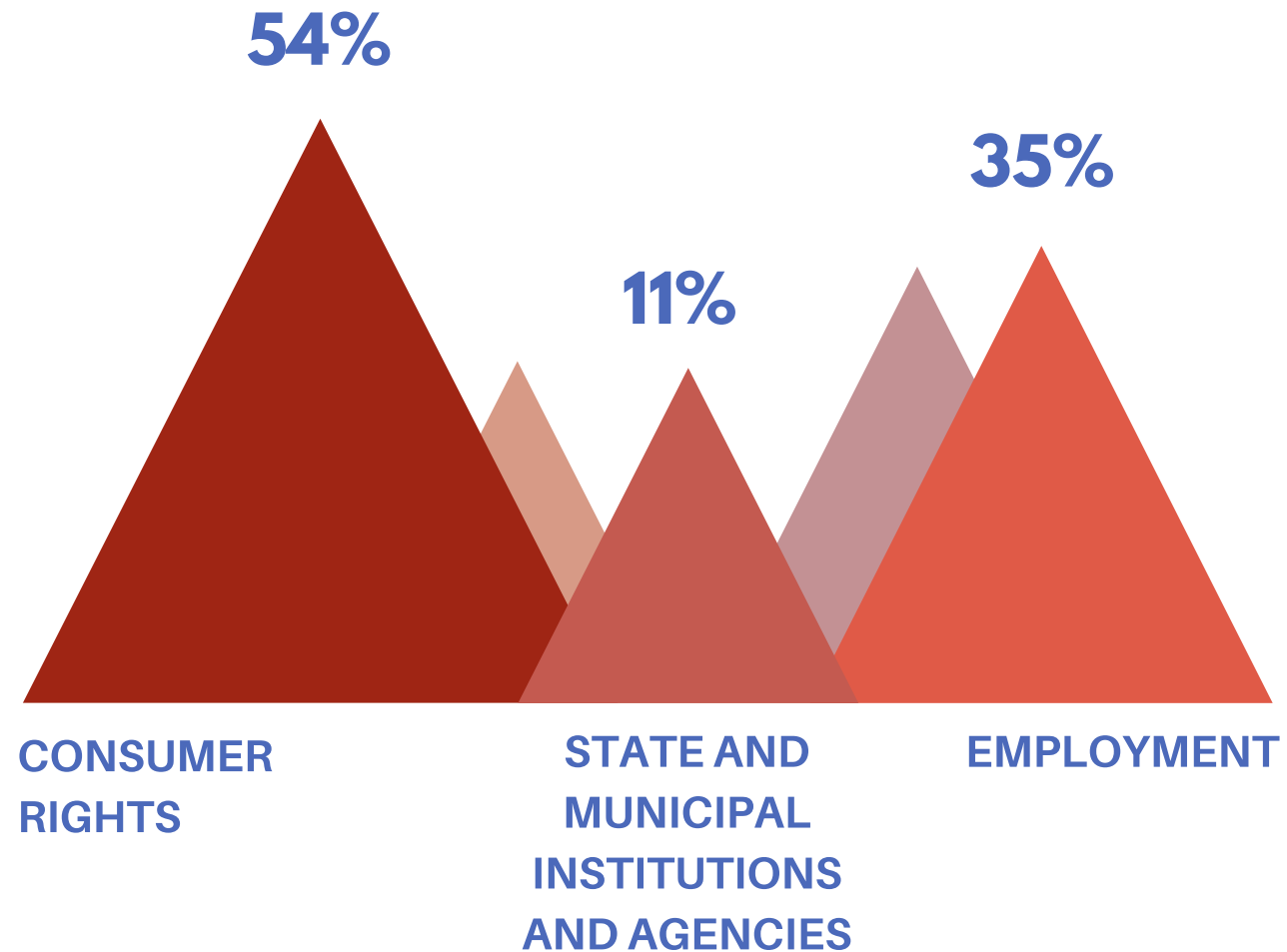


27%
LEGAL
ENTITIES

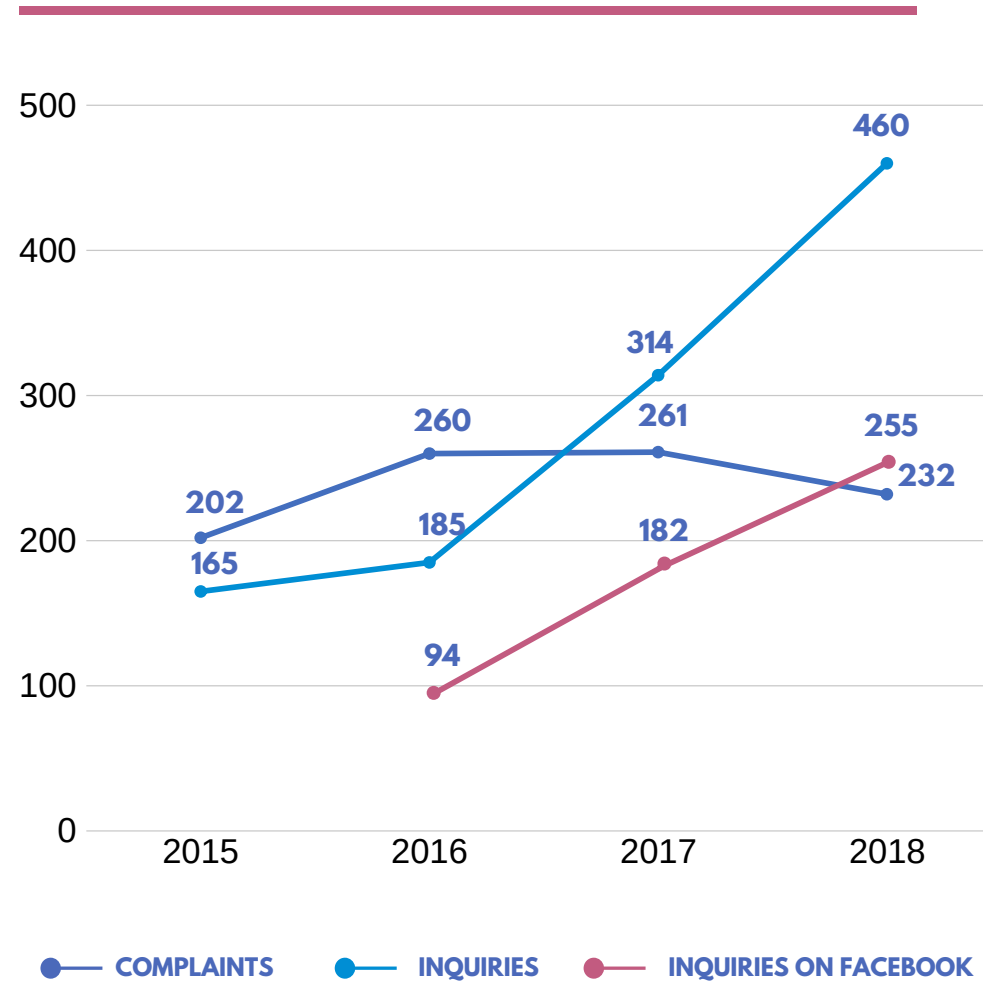


4%
ANONYMOUS

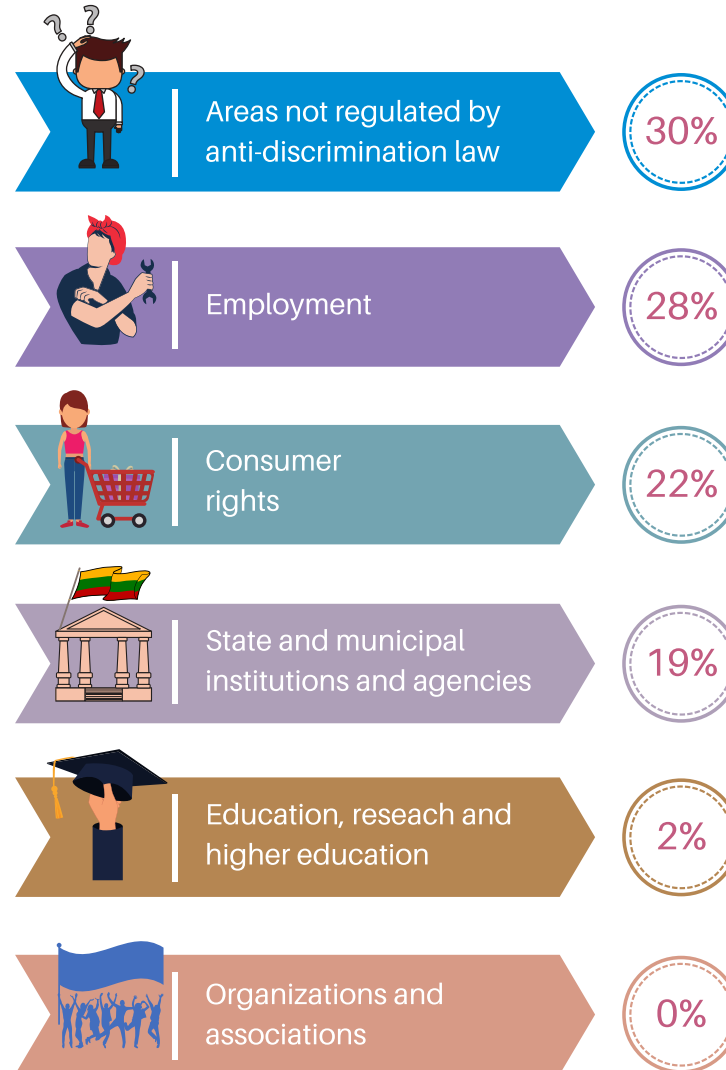
IN WHICH AREAS ARE THE VIOLATIONS OF THE LAW MOSTLY RECORDED?



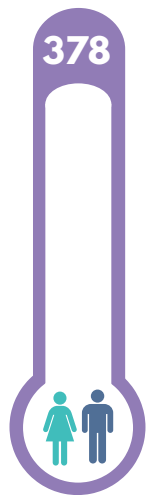
HOW THE NUMBERS ARE CHANGING?



AREAS CONCERNING WHICH WE RECEIVED THE MOST INQUIRIES AND COMPLAINTS



GROUNDS ON WHICH WE RECEIVED INQUIRIES AND COMPLAINTS



GENDER



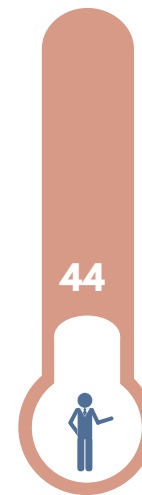
AGE



DISABILITY



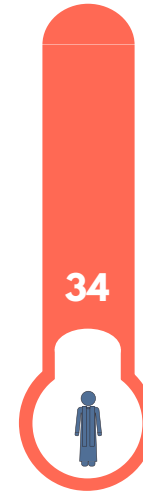
RACE, NATIONALITY,
LANGUAGE, ORIGIN,
ETHNICITY, CITIZENSHIP



SOCIAL
STATUS



SEXUAL
ORIENTATION



RELIGION, BELIEF,
CONVICTIONS AND
VIEWS